

BROADMORE

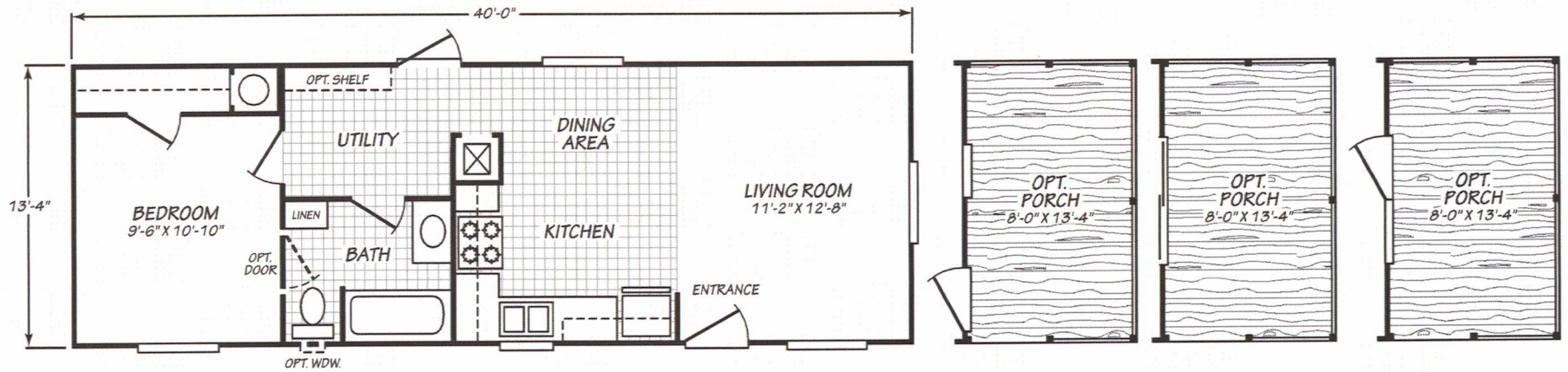
By

FLEETWOOD

Broadmore Standard Features

<p><u>EXTERIOR</u></p> <ul style="list-style-type: none"> 4" trim all windows Painted shutters FDS & Hitch end (multi section) Painted shutter hitch end (single section) 6" Eave all sides Multi section No rear end wall eave on singlewides LP SmartPanel exterior Siding Black roof vents <p><u>INTERIOR / FINISH WALLS</u></p> <ul style="list-style-type: none"> Factory select carpet 3/8" Carpet pad Factory select vinyl flooring 8' Flat ceilings Textured ceilings (orange peel) Factory select vinyl covered wall panels t/o Wainscot bead board panel dining room (except 16723B) Accent décor panel in master bedroom Wire closet shelves 2- Panel white passage doors with white trim Stick-on door stops White window trim <p><u>DOORS & WINDOWS</u></p> <ul style="list-style-type: none"> 36" Steel in-swing front door 34" Fiberglass out-swing rear door Vinyl clad thermo pane windows with Low "E" coating Horizontal slide windows Residential style mortise door hinges-2 per door Vinyl mini blinds throughout <p><u>KITCHEN</u></p> <ul style="list-style-type: none"> 18 cuft. Whirlpool Black frost free refrigerator 30" Whirlpool Black free standing electric range, w/clock, window & timer 7" Double cell stainless steel sink Plastic dual handle faucet Bank of drawers Gimp backsplash <p><u>MASTER BATH</u></p> <ul style="list-style-type: none"> 60" 3 pc. ABS tub/shower Plastic sink w/ dual handle plastic faucets Exhaust fan 36" height lavy cabinet Towel bar & tissue holder Gimp backsplash <p><u>GUEST BATH</u></p> <ul style="list-style-type: none"> 60" 3 pc. ABS tub/shower Plastic sink w/ dual handle plastic faucets Exhaust fan 36" height lavy cabinet Towel bar & tissue holder Gimp backsplash 	<p><u>CABINETRY</u></p> <ul style="list-style-type: none"> Coffee Cherry/MDF raised panel cabinet door w/knob 30" overhead kitchen cabinets No shelf above washer / dryer Shelf above refrigerator Crown molding kitchen cabinets Bead board accent above kitchen overheads Overhead cabinets w/ fixed shelves & finished sides Unlined base cabinets w/ MDF fixed shelves Metal side mount drawer guides Wood ply drawer sides <p><u>ELECTRIC & PLUMBING</u></p> <ul style="list-style-type: none"> 200 Amps. all electric service (gas optional) Master water shut-off valve Shut-off valve on toilets 30 gallon electric water heater Electric furnace Bedroom ceiling lights 2- bulb ceiling lights Wire & brace for ceiling fan in living room GFI patio plug near rear door Porch lights all exterior doors 30" power range hood with light <p><u>STRUCTURAL</u></p> <ul style="list-style-type: none"> 1 Year "wall to wall" warranty 30 lb. Roof load 2" x 4" Exterior walls 16" o.c. 19/32" Floor decking 3:12 Roof pitch Class A fire rated fiberglass 30 yr shingles Removable hitches Zone III Specifications: R-28 roof, R-11 walls, R-22 floor insulation
<p>Specifications Subject to Change Without Notice or Obligation</p> <p style="text-align: right;">03/17/16</p>	

BROADMORE

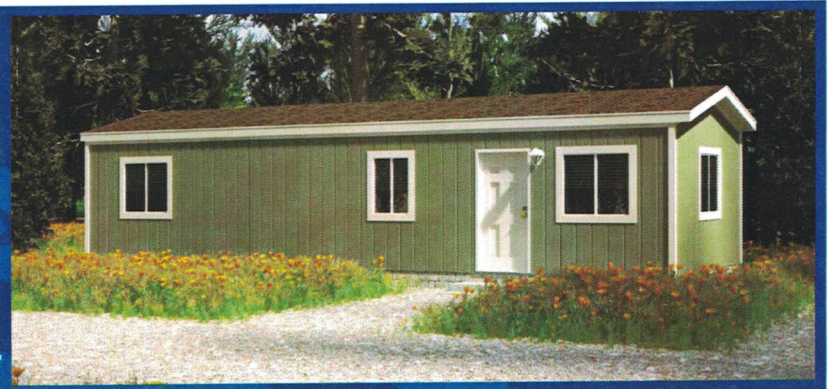
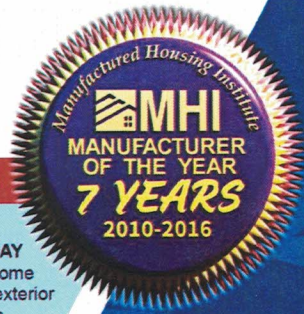


MODEL 14401B

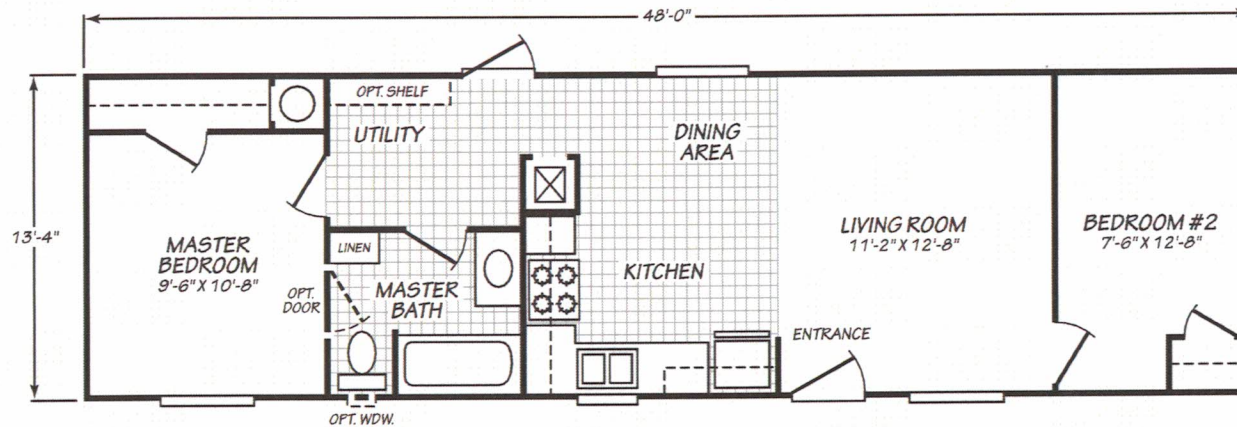
1 Bedroom • 1 Bath • 533 Square Feet

©2016 FLEETWOOD HOMES INC. ALL RIGHTS RESERVED

Important: Because we continually update and modify our products, it is important for you to know that our brochures and literature are for illustrative purposes only. **ILLUSTRATIONS MAY SHOW OPTIONAL FEATURES.** All information contained herein may vary from the actual home we build. Dimensions are nominal length and width measurements are from exterior wall to exterior wall. We reserve the right to make changes at any time, without notice or obligation, in prices, colors, materials, specifications, features and models. Please check with your retailer for specific information about the home you select.



BROADMORE



MODEL 14482B

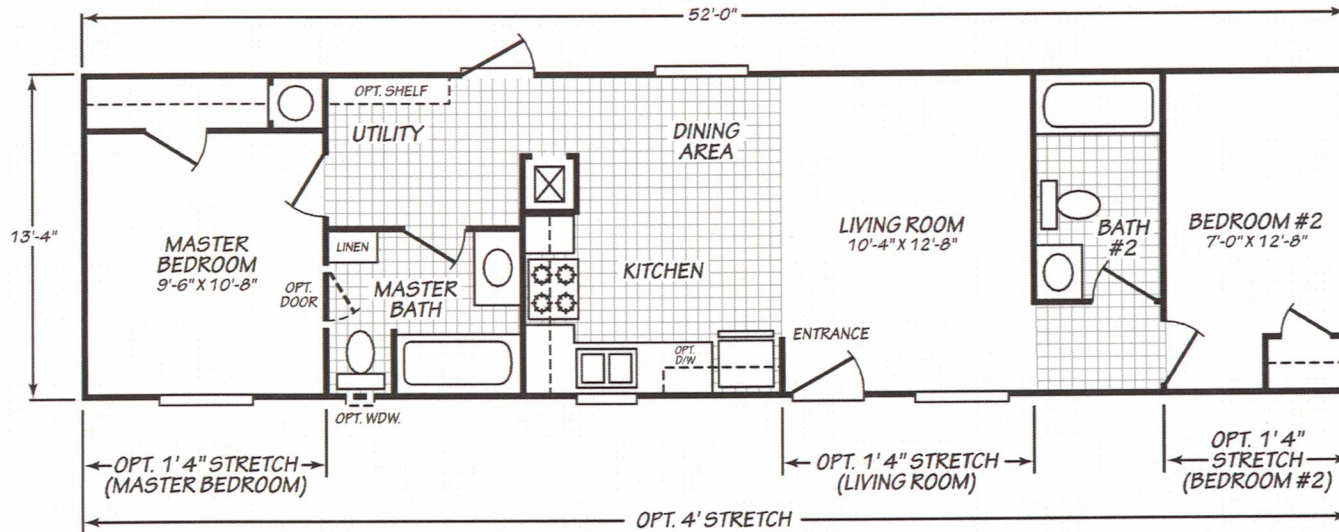
2 Bedroom • 1 Bath • 639 Square Feet

©2016 FLEETWOOD HOMES INC. ALL RIGHTS RESERVED

Important: Because we continually update and modify our products, it is important for you to know that our brochures and literature are for illustrative purposes only. **ILLUSTRATIONS MAY SHOW OPTIONAL FEATURES.** All information contained herein may vary from the actual home we build. Dimensions are nominal length and width measurements are from exterior wall to exterior wall. We reserve the right to make changes at any time, without notice or obligation, in prices, colors, materials, specifications, features and models. Please check with your retailer for specific information about the home you select.



BROADMORE



MODEL 14522B

2 Bedroom • 2 Bath • 693 Square Feet

©2016 FLEETWOOD HOMES INC. ALL RIGHTS RESERVED

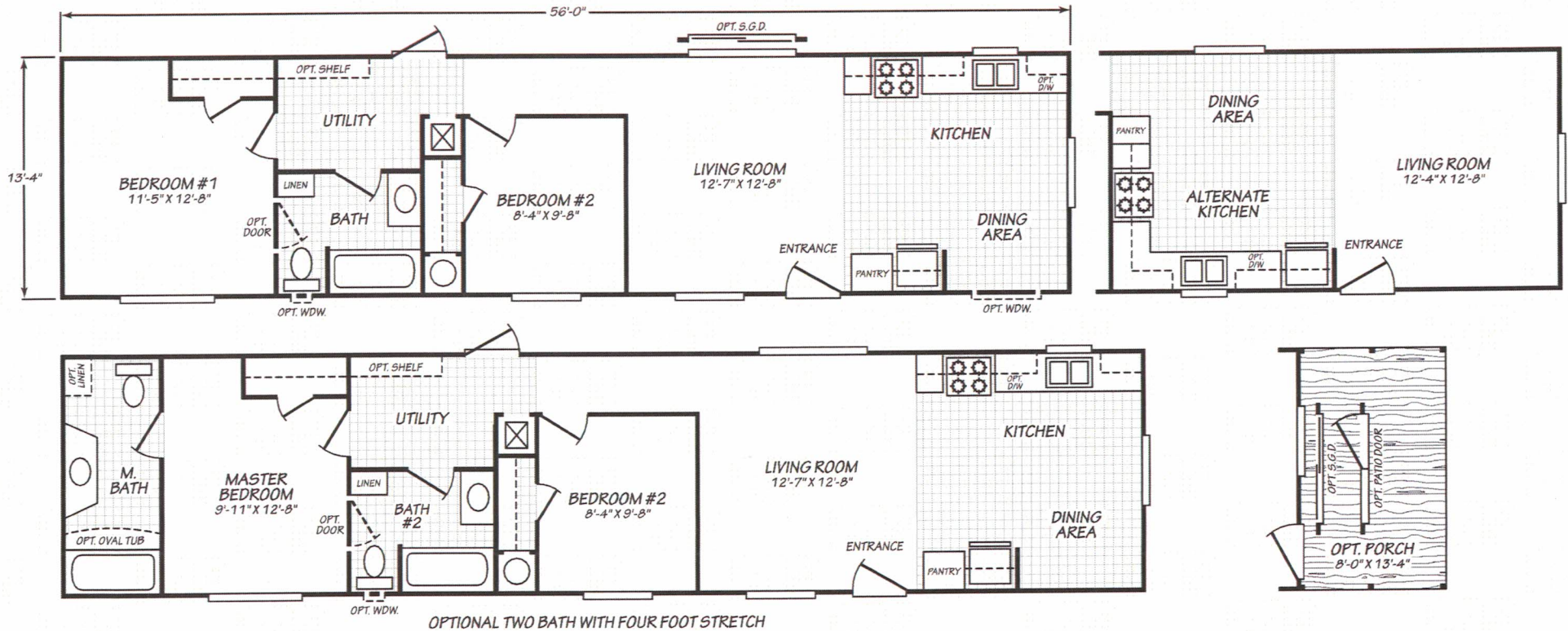
Important: Because we continually update and modify our products, it is important for you to know that our brochures and literature are for illustrative purposes only. **ILLUSTRATIONS MAY SHOW OPTIONAL FEATURES.** All information contained herein may vary from the actual home we build. Dimensions are nominal length and width measurements are from exterior wall to exterior wall. We reserve the right to make changes at any time, without notice or obligation, in prices, colors, materials, specifications, features and models. Please check with your retailer for specific information about the home you select.



BM/230/JUL15
PFS APPROVAL_7/07/15



BROADMORE

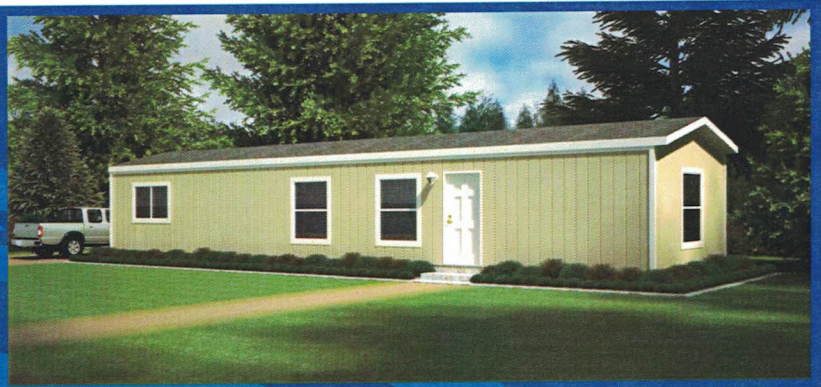


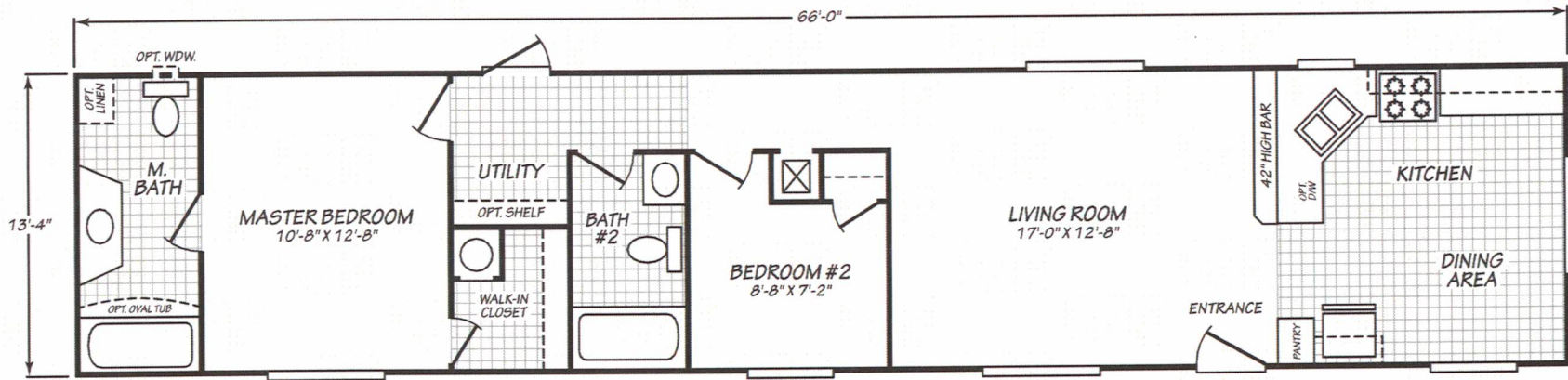
MODEL 14562B

2 Bedroom • 1 Bath • 746 Square Feet

©2016 FLEETWOOD HOMES INC. ALL RIGHTS RESERVED

Important: Because we continually update and modify our products, it is important for you to know that our brochures and literature are for illustrative purposes only. **ILLUSTRATIONS MAY SHOW OPTIONAL FEATURES.** All information contained herein may vary from the actual home we build. Dimensions are nominal length and width measurements are from exterior wall to exterior wall. We reserve the right to make changes at any time, without notice or obligation, in prices, colors, materials, specifications, features and models. Please check with your retailer for specific information about the home you select.



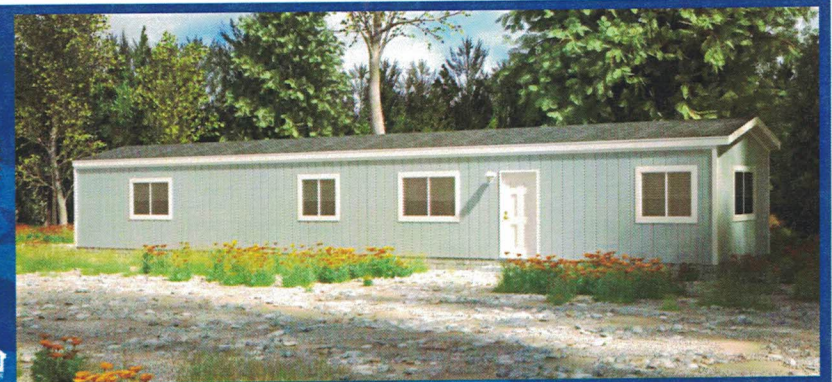


MODEL 14662B

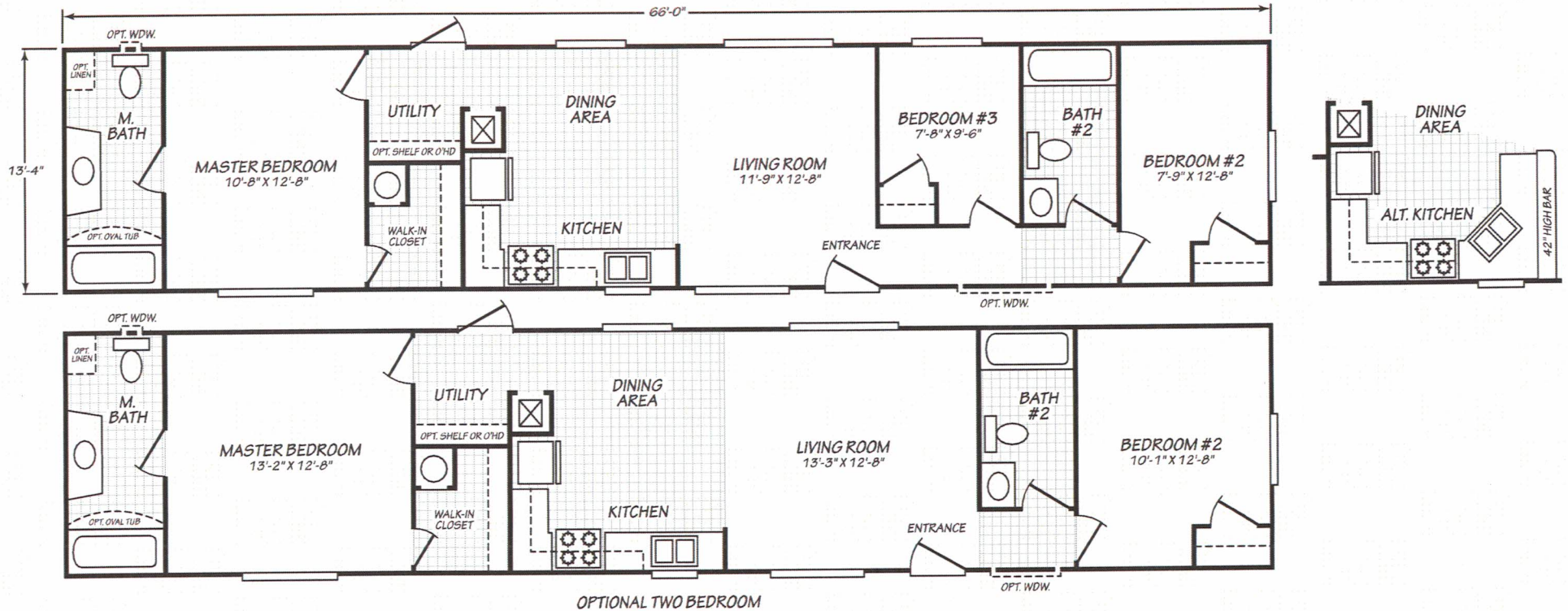
2 Bedroom • 2 Bath • 880 Square Feet

©2016 FLEETWOOD HOMES INC. ALL RIGHTS RESERVED

Important: Because we continually update and modify our products, it is important for you to know that our brochures and literature are for illustrative purposes only. **ILLUSTRATIONS MAY SHOW OPTIONAL FEATURES.** All information contained herein may vary from the actual home we build. Dimensions are nominal length and width measurements are from exterior wall to exterior wall. We reserve the right to make changes at any time, without notice or obligation, in prices, colors, materials, specifications, features and models. Please check with your retailer for specific information about the home you select.



BROADMORE



MODEL 14663B

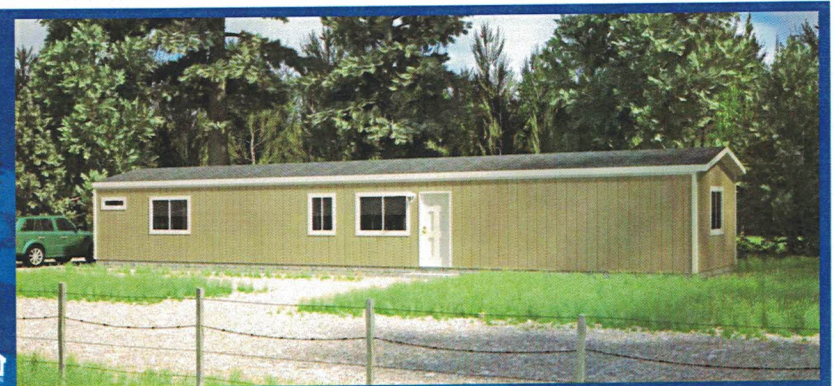
3 Bedroom • 2 Bath • 880 Square Feet

©2016 FLEETWOOD HOMES INC. ALL RIGHTS RESERVED

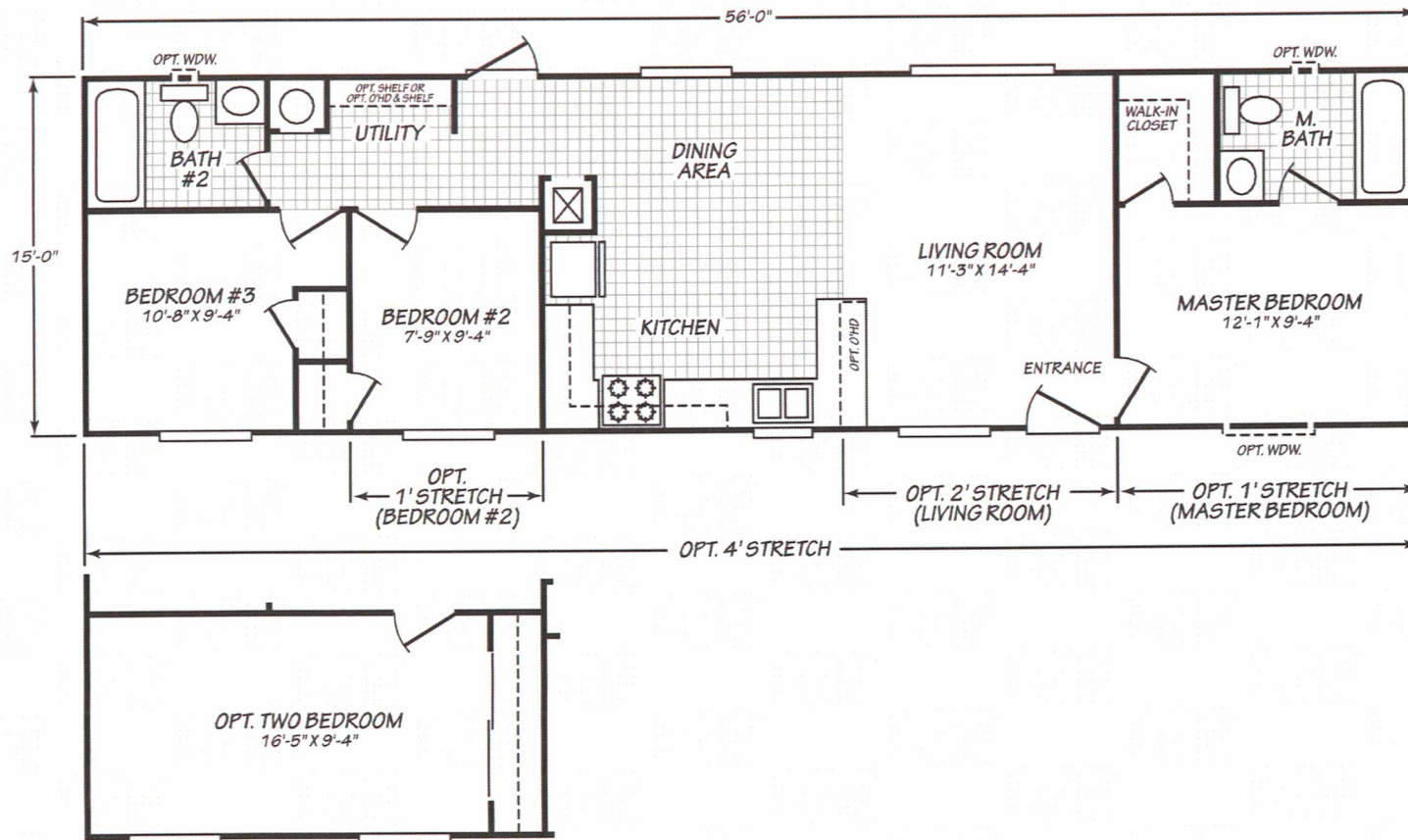
Important: Because we continually update and modify our products, it is important for you to know that our brochures and literature are for illustrative purposes only. **ILLUSTRATIONS MAY SHOW OPTIONAL FEATURES.** All information contained herein may vary from the actual home we build. Dimensions are nominal length and width measurements are from exterior wall to exterior wall. We reserve the right to make changes at any time, without notice or obligation, in prices, colors, materials, specifications, features and models. Please check with your retailer for specific information about the home you select.



BM/230/AUG15
PFS APPROVAL 8/11/15



BROADMORE



MODEL 16563B

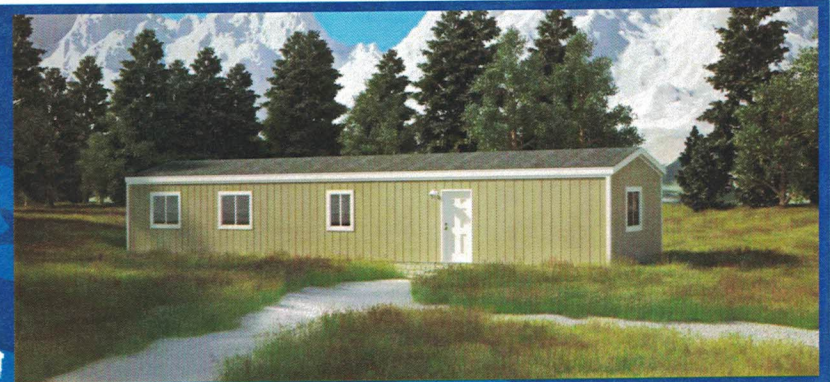
3 Bedroom • 2 Bath • 840 Square Feet

©2016 FLEETWOOD HOMES INC. ALL RIGHTS RESERVED

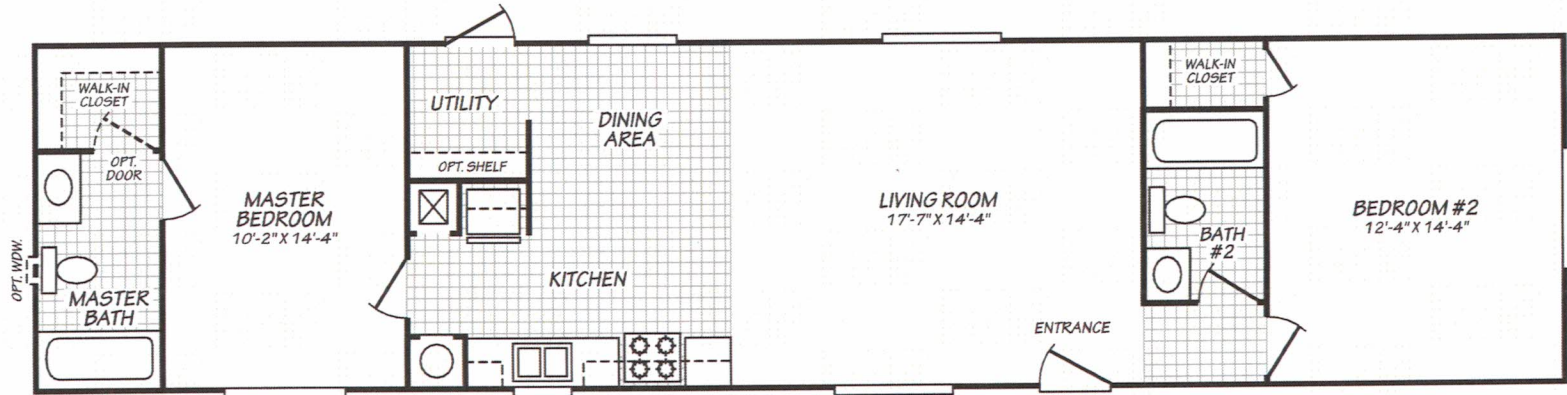
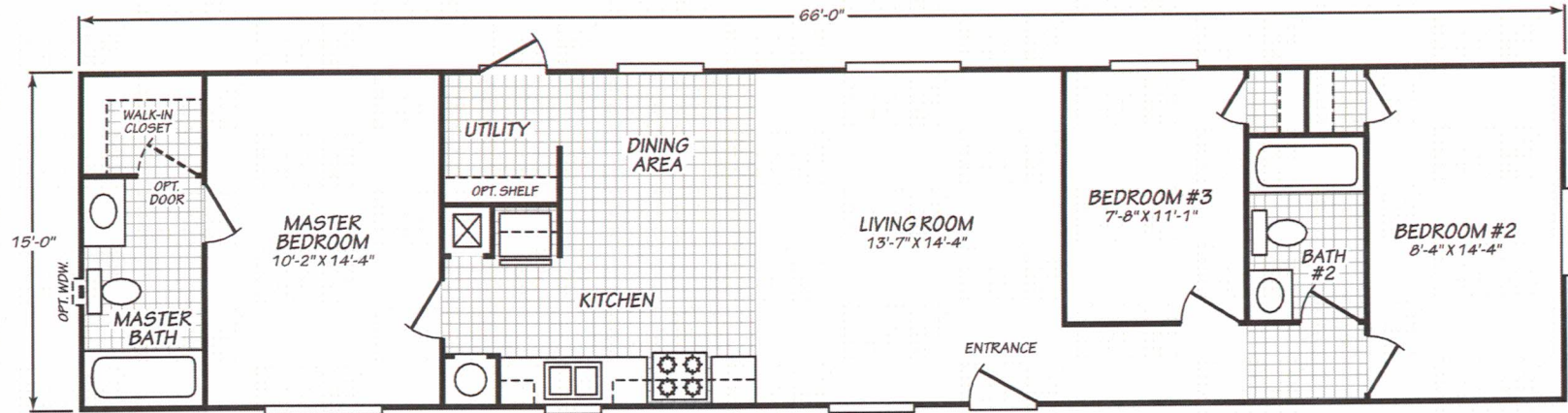
Important: Because we continually update and modify our products, it is important for you to know that our brochures and literature are for illustrative purposes only. **ILLUSTRATIONS MAY SHOW OPTIONAL FEATURES.** All information contained herein may vary from the actual home we build. Dimensions are nominal length and width measurements are from exterior wall to exterior wall. We reserve the right to make changes at any time, without notice or obligation, in prices, colors, materials, specifications, features and models. Please check with your retailer for specific information about the home you select.



BM/230/AUG15
PFS APPROVAL_8/06/15



BROADMORE



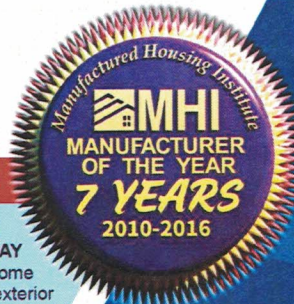
OPTIONAL TWO BEDROOM

MODEL 16663B

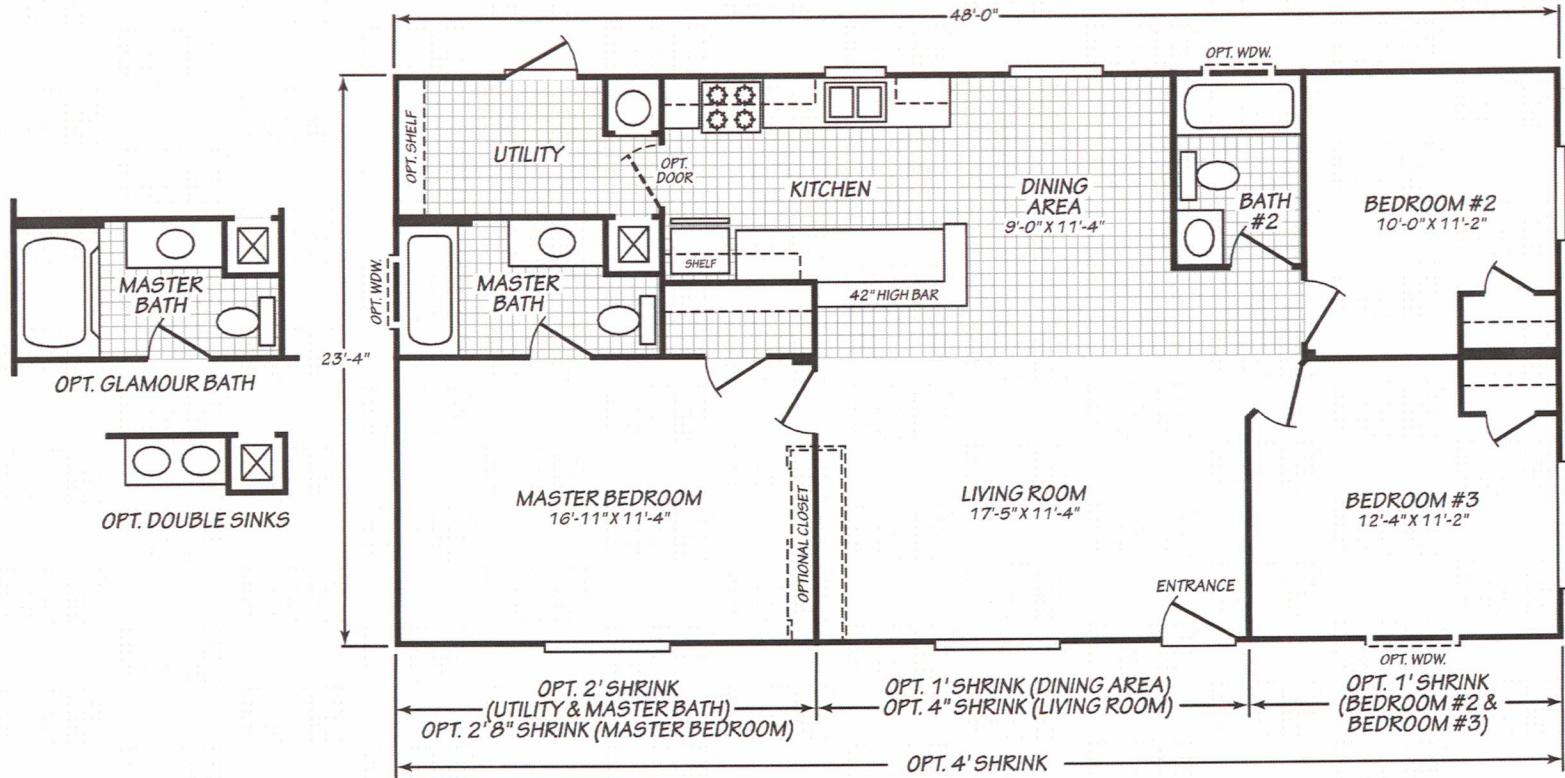
3 Bedroom • 2 Bath • 990 Square Feet

©2016 FLEETWOOD HOMES INC. ALL RIGHTS RESERVED

Important: Because we continually update and modify our products, it is important for you to know that our brochures and literature are for illustrative purposes only. **ILLUSTRATIONS MAY SHOW OPTIONAL FEATURES.** All information contained herein may vary from the actual home we build. Dimensions are nominal length and width measurements are from exterior wall to exterior wall. We reserve the right to make changes at any time, without notice or obligation, in prices, colors, materials, specifications, features and models. Please check with your retailer for specific information about the home you select.



BROADMORE

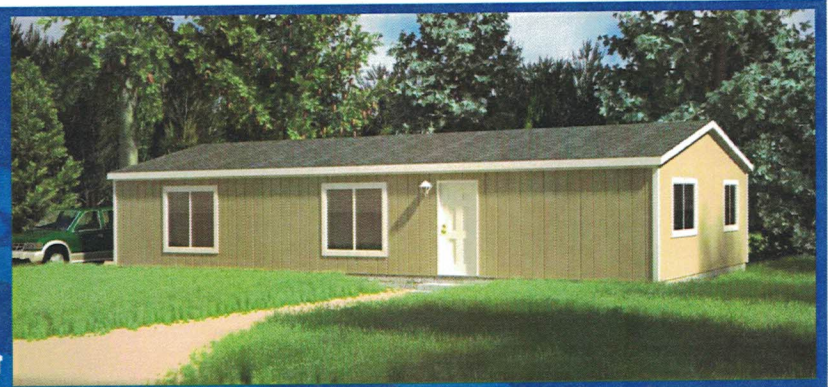


MODEL 24483B

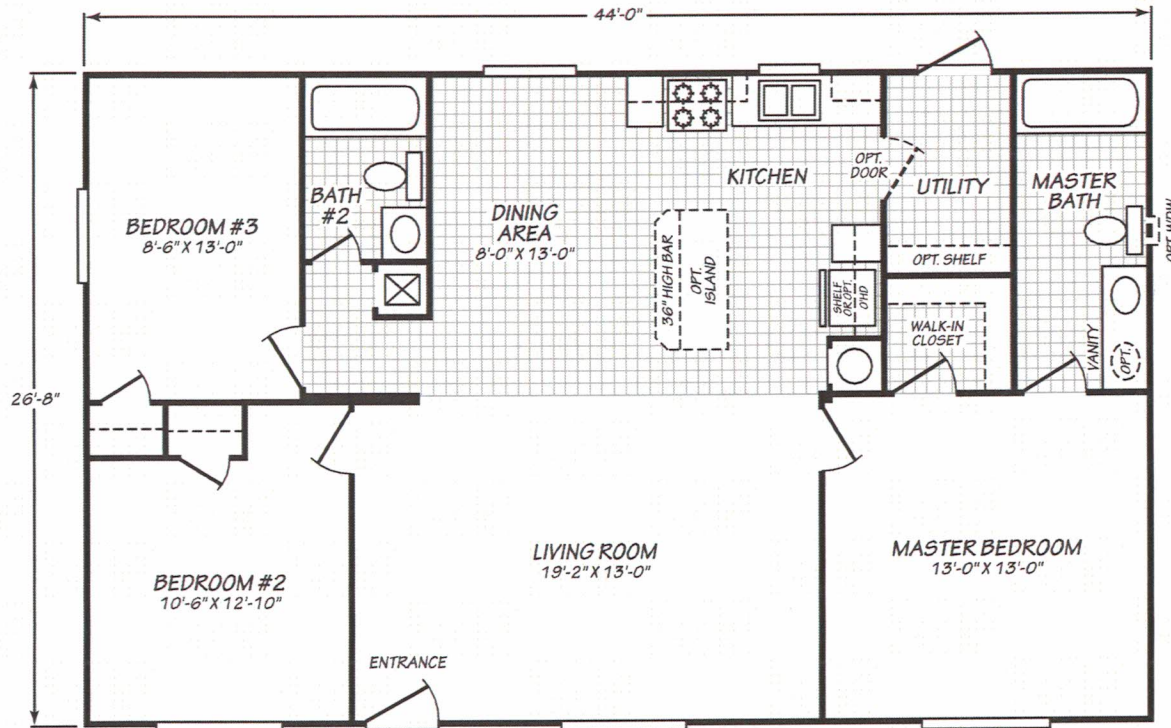
3 Bedroom • 2 Bath • 1,119 Square Feet

©2016 FLEETWOOD HOMES INC. ALL RIGHTS RESERVED

Important: Because we continually update and modify our products, it is important for you to know that our brochures and literature are for illustrative purposes only. **ILLUSTRATIONS MAY SHOW OPTIONAL FEATURES.** All information contained herein may vary from the actual home we build. Dimensions are nominal length and width measurements are from exterior wall to exterior wall. We reserve the right to make changes at any time, without notice or obligation, in prices, colors, materials, specifications, features and models. Please check with your retailer for specific information about the home you select.



BROADMORE



MODEL 28443B

3 Bedroom • 2 Bath • 1,173 Square Feet

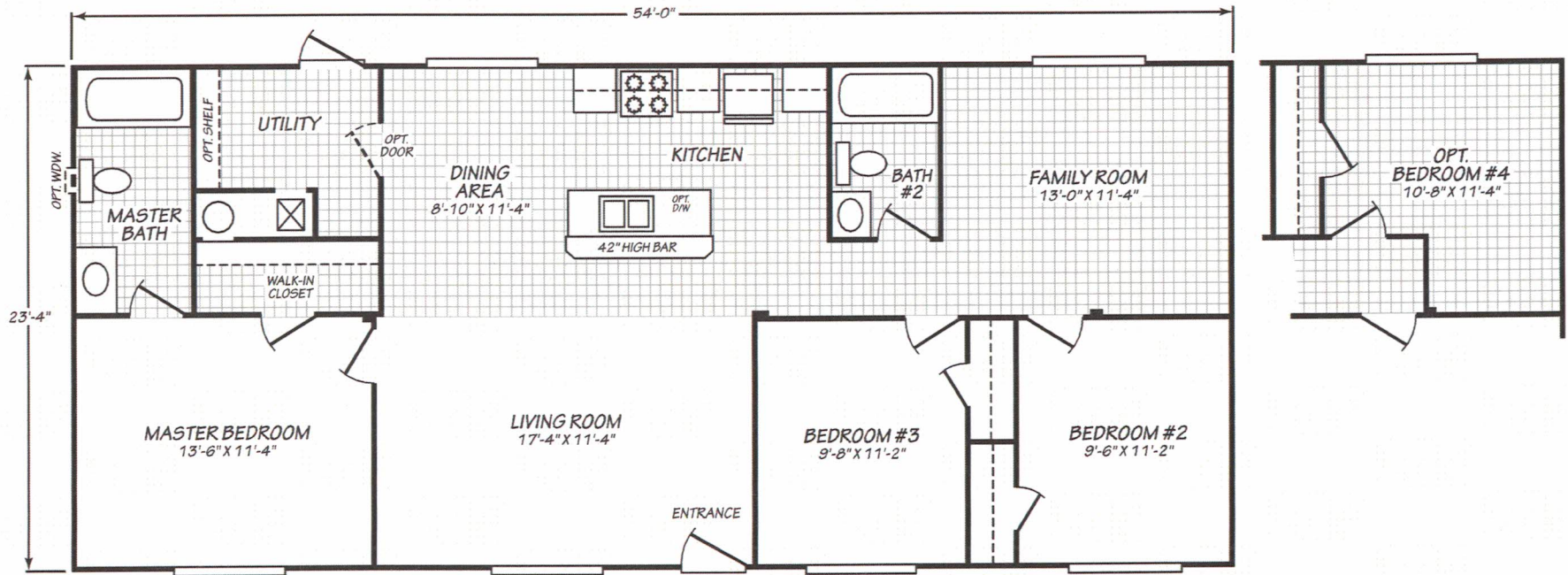
©2017 FLEETWOOD HOMES INC. ALL RIGHTS RESERVED

Important: Because we continually update and modify our products, it is important for you to know that our brochures and literature are for illustrative purposes only. **ILLUSTRATIONS MAY SHOW OPTIONAL FEATURES.** All information contained herein may vary from the actual home we build. Dimensions are nominal length and width measurements are from exterior wall to exterior wall. We reserve the right to make changes at any time, without notice or obligation, in prices, colors, materials, specifications, features and models. Please check with your retailer for specific information about the home you select.



BM/230/JUL16
PFS APPROVAL_7/05/16

BROADMORE



MODEL 24543B

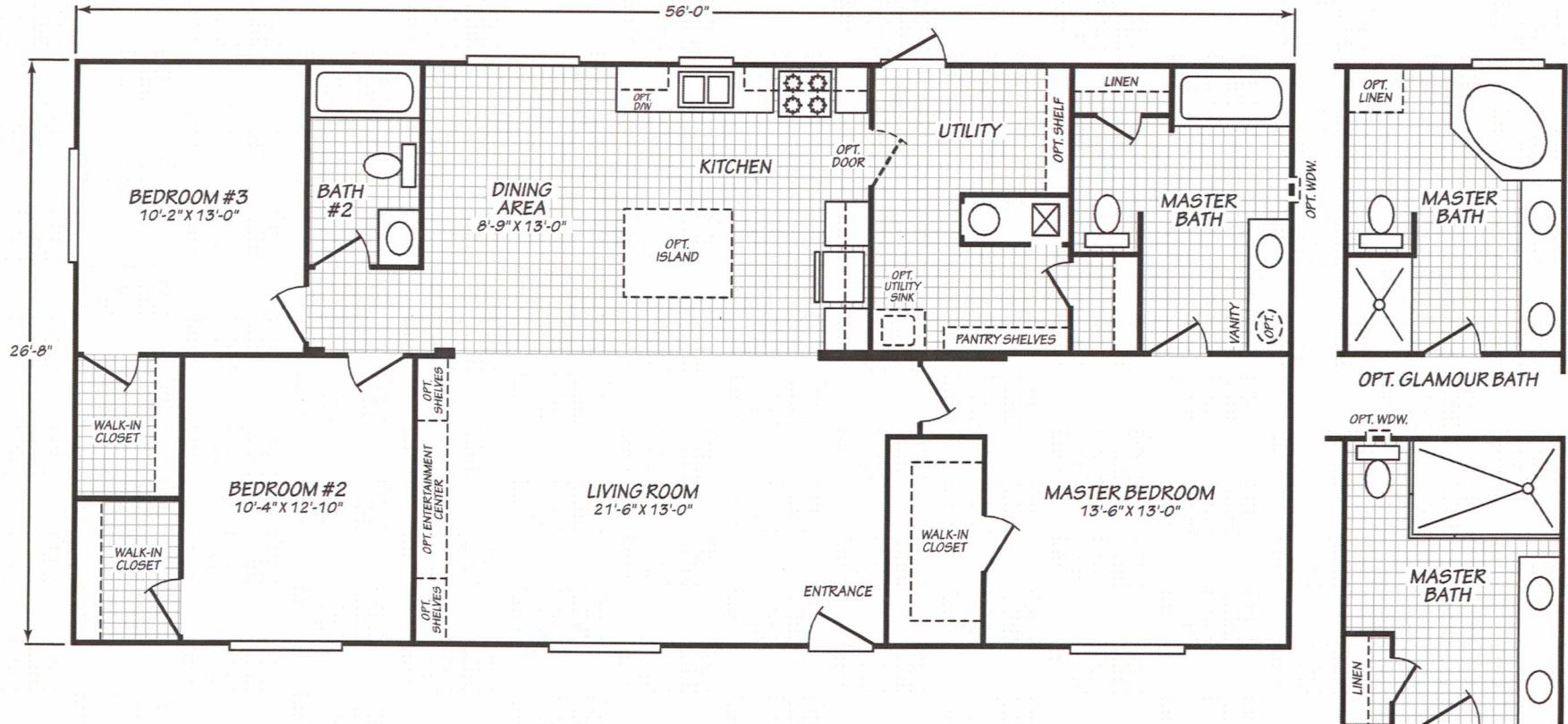
3 Bedroom • 2 Bath • 1,259 Square Feet

©2016 FLEETWOOD HOMES INC. ALL RIGHTS RESERVED

Important: Because we continually update and modify our products, it is important for you to know that our brochures and literature are for illustrative purposes only. **ILLUSTRATIONS MAY SHOW OPTIONAL FEATURES.** All information contained herein may vary from the actual home we build. Dimensions are nominal length and width measurements are from exterior wall to exterior wall. We reserve the right to make changes at any time, without notice or obligation, in prices, colors, materials, specifications, features and models. Please check with your retailer for specific information about the home you select.

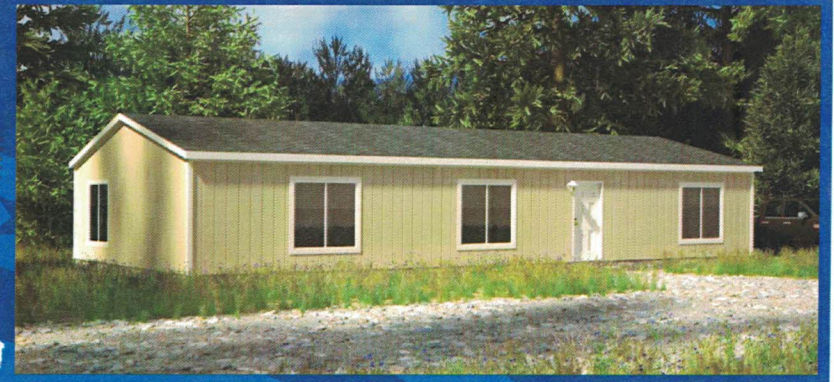


BROADMORE



MODEL 28563B

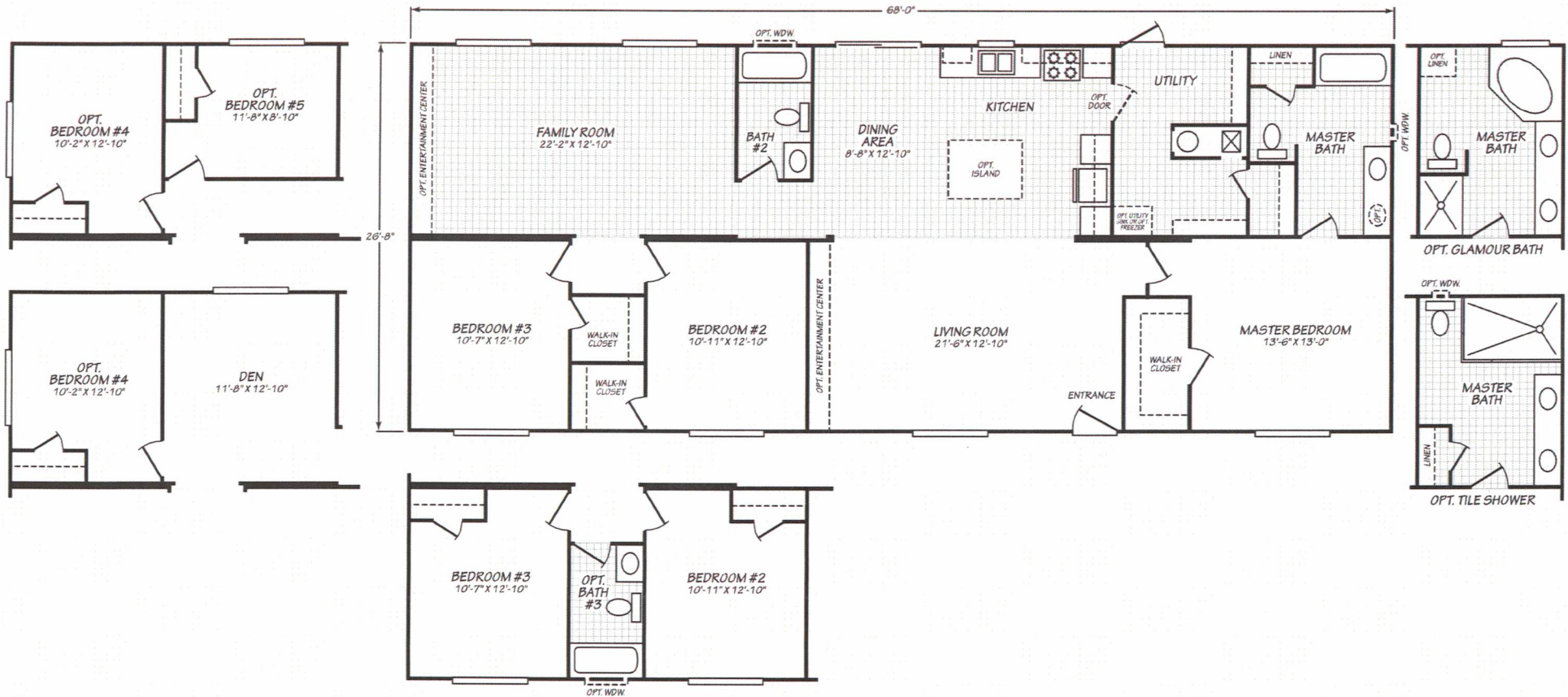
3 Bedroom • 2 Bath • 1,492 Square Feet



©2016 FLEETWOOD HOMES INC. ALL RIGHTS RESERVED

Important: Because we continually update and modify our products, it is important for you to know that our brochures and literature are for illustrative purposes only. **ILLUSTRATIONS MAY SHOW OPTIONAL FEATURES.** All information contained herein may vary from the actual home we build. Dimensions are nominal length and width measurements are from exterior wall to exterior wall. We reserve the right to make changes at any time, without notice or obligation, in prices, colors, materials, specifications, features and models. Please check with your retailer for specific information about the home you select.

BROADMORE



MODEL 28683B

3 Bedroom • 2 Bath • 1,812 Square Feet

©2016 FLEETWOOD HOMES INC. ALL RIGHTS RESERVED

Important: Because we continually update and modify our products, it is important for you to know that our brochures and literature are for illustrative purposes only. **ILLUSTRATIONS MAY SHOW OPTIONAL FEATURES.** All information contained herein may vary from the actual home we build. Dimensions are nominal length and width measurements are from exterior wall to exterior wall. We reserve the right to make changes at any time, without notice or obligation, in prices, colors, materials, specifications, features and models. Please check with your retailer for specific information about the home you select.

