

**TIMBERWOOD**

**By**

**FLEETWOOD**

# TIMBERWOOD STANDARD LIVING FEATURES

## EXTERIOR

Foundation ready  
6" Top & bottom trim FDS windows  
4" trim remaining windows  
18' dormer w/columns accent paint per plan  
6" eaves around home 28' wides  
10" eaves around home 30' wides  
LP Smart Panel exterior siding  
Black roof vents

## INTERIOR / FINISH WALLS

15 oz. Carpet installed  
3/8" Carpet pad  
Vinyl flooring in wet areas & per plan  
Tape & texture walls w/rounded corners  
Customer interior paint colors per plan  
Closets painted drywall & molding  
Pantries painted drywall & molding  
White textured ceilings (orange peel)  
4' wide accent ceiling w/2 can lights dining room  
2 1/4" door trim. 1" flat back of closet doors  
Wire closet & pantry shelves  
White 2- panel passage doors  
White window trim & window sills – no T&T  
12" wood box valances w/accent  
L/R, F/R, D/R, M/Br, KIT

Entry lino

## DOORS & WINDOWS

36" Steel in-swing front door no deadbolt  
32" Steel in-swing rear door no deadbolt  
Vinyl clad thermo pane windows  
with Low "E" coating  
Residential style mortise door hinges  
Floor mount door stops

**Mini blinds optional**

## KITCHEN

18 cuft. Whirlpool Black frost free refrigerator  
30" Whirlpool Black free standing electric range, w/clock, window & timer  
7" Double cell stainless steel sink  
Dual handle chrome faucet  
Bank of drawers w/ 1 small & 2 large Laminate backsplash

## MASTER BATH

Baymont Tile Shower  
Acrylic sink w/ dual handle faucets  
Single lever tub/shower diverter  
Exhaust fan  
36" height lavy cabinet  
3- bulb cosmetic light centered  
Towel bar & tissue holder  
Laminate backsplash

## GUEST BATH

60" 3 pc. ABS tub/shower  
Plastic sink w/ dual handle faucets  
Single lever tub/shower diverter  
Exhaust fan  
36" height lavy cabinet  
24"x42" Mirror  
8" 2- bulb ceiling light  
Towel bar and tissue holder  
Laminate backsplash

## CABINETRY

Coffe Cherry MDF raised panel cabinet door  
Doors w/knob & drawers w/clam shell pull  
42" overhead kitchen cabinets  
12" shadow box top w/Black bead board kitchen  
Crown molding standard kitchen  
Range hood canopy w/fan above range  
**Shelf optional above washer / dryer**  
Double shelves above refrigerator  
Overhead cabinets w/adjustable shelf  
Bath cabinets furniture style w/cubby below doors  
Metal side mount drawer guides  
Wood ply drawer sides

## ELECTRIC & PLUMBING

200 Amp. all electric service (gas optional)  
Master water shut-off valve  
Shut-off valve on toilets  
30 gallon electric water heater  
Electric furnace  
Bedroom ceiling lights  
LED can lights standard kitchens  
LED can lights in dining room  
GFI patio plug near rear door  
Black upgrade porch light front door  
White porch light back door  
Wire & brace ceiling fan living room/family room

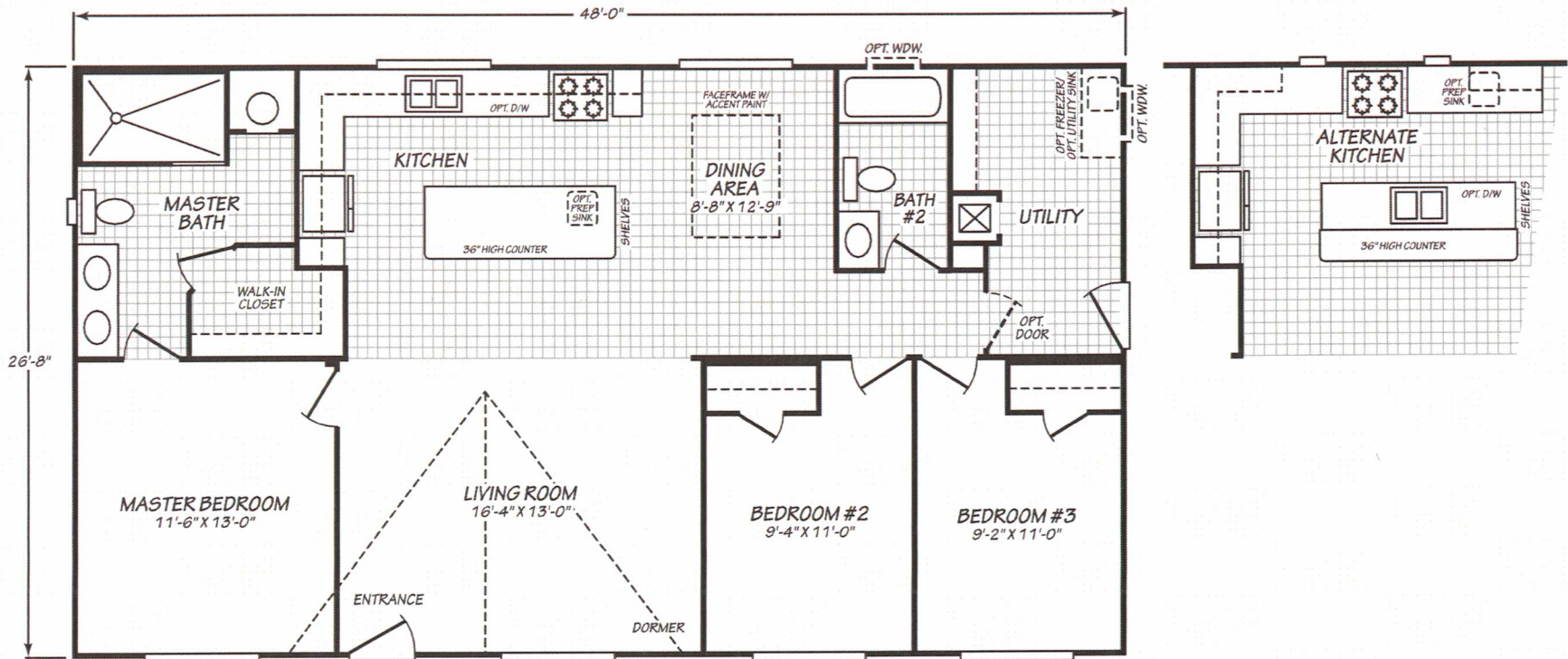
## STRUCTURAL

1 Year "wall to wall" warranty  
30 lb. Roof load  
8'-6" flat ceilings  
2" x 6" Exterior walls 16" o.c.  
19/32" OSB Floor decking  
2"x6" - 19.2" o.c. floor joist (2"x8" 30' wides)  
2"x8" - 19.2 o.c. floor joist (16' wide only)  
3:12 Roof pitch  
Class A fire rated fiberglass 30 yr shingles  
Removable hitches  
Zone III Specifications: R-21 roof, R-21 walls,  
R-11 floor

Specifications Subject to Change Without Notice or  
Obligation 09/13/2016

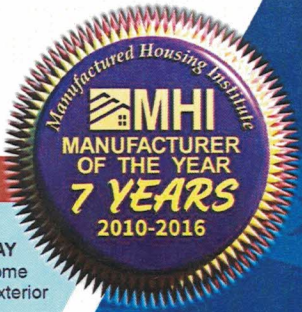


# TIMBERWOOD



## MODEL 28483S

3 Bedroom • 2 Bath • 1,279 Square Feet

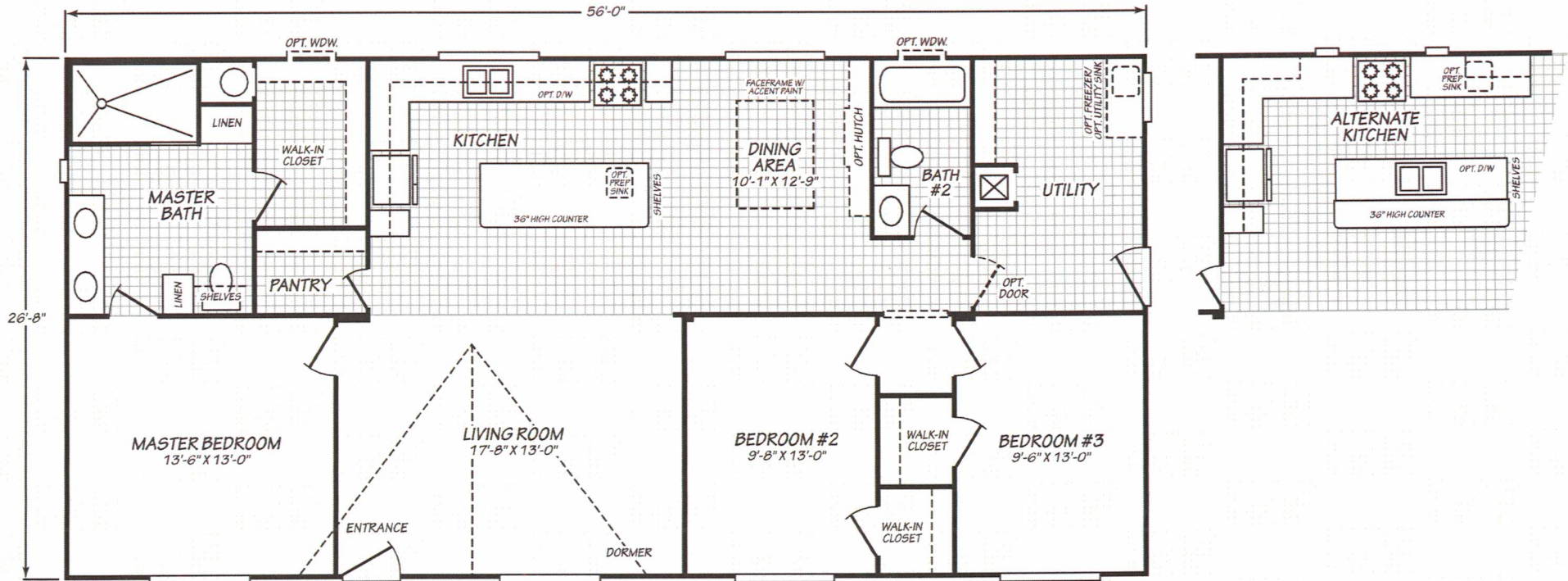


©2016 FLEETWOOD HOMES INC. ALL RIGHTS RESERVED

Important: Because we continually update and modify our products, it is important for you to know that our brochures and literature are for illustrative purposes only. **ILLUSTRATIONS MAY SHOW OPTIONAL FEATURES.** All information contained herein may vary from the actual home we build. Dimensions are nominal length and width measurements are from exterior wall to exterior wall. We reserve the right to make changes at any time, without notice or obligation, in prices, colors, materials, specifications, features and models. Please check with your retailer for specific information about the home you select.



# TIMBERWOOD

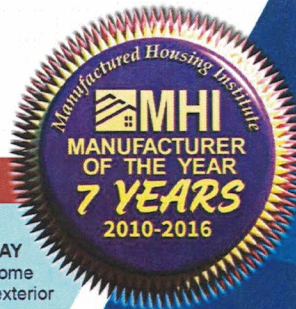


## MODEL 28563S

3 Bedroom • 2 Bath • 1,492 Square Feet

©2016 FLEETWOOD HOMES INC. ALL RIGHTS RESERVED

Important: Because we continually update and modify our products, it is important for you to know that our brochures and literature are for illustrative purposes only. **ILLUSTRATIONS MAY SHOW OPTIONAL FEATURES.** All information contained herein may vary from the actual home we build. Dimensions are nominal length and width measurements are from exterior wall to exterior wall. We reserve the right to make changes at any time, without notice or obligation, in prices, colors, materials, specifications, features and models. Please check with your retailer for specific information about the home you select.

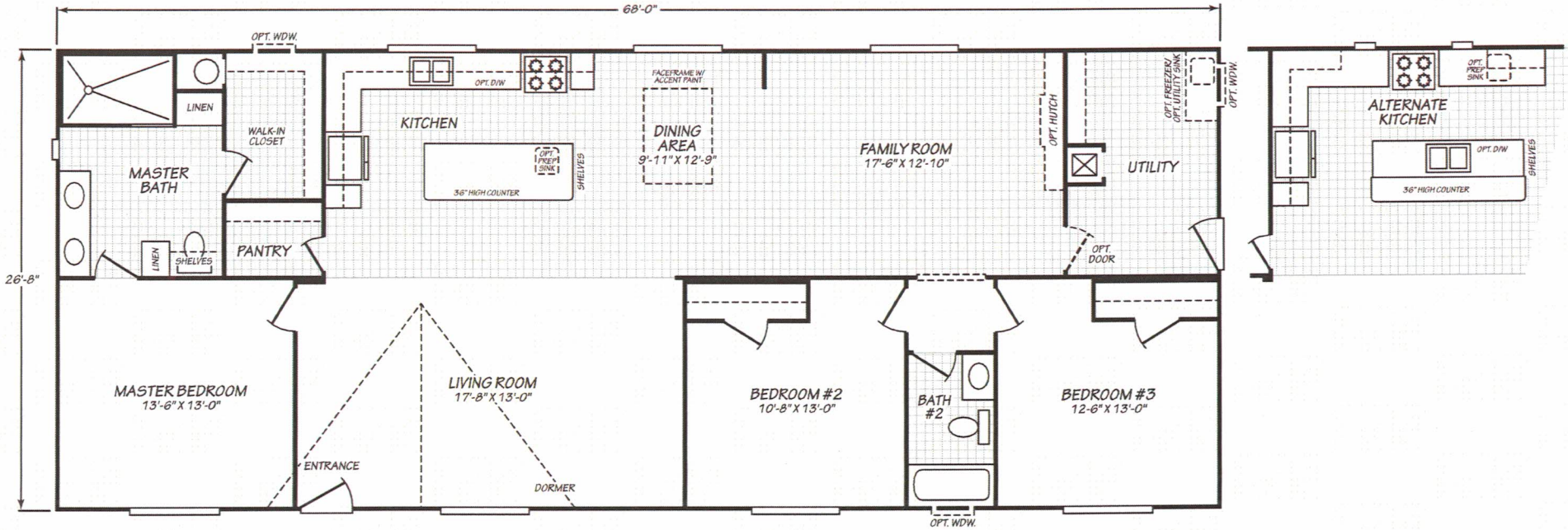


TW/230/SEP16  
PFS APPROVAL\_9/22/16





# TIMBERWOOD

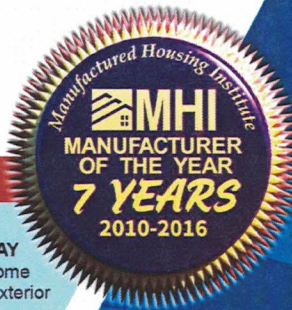


## MODEL 28683S

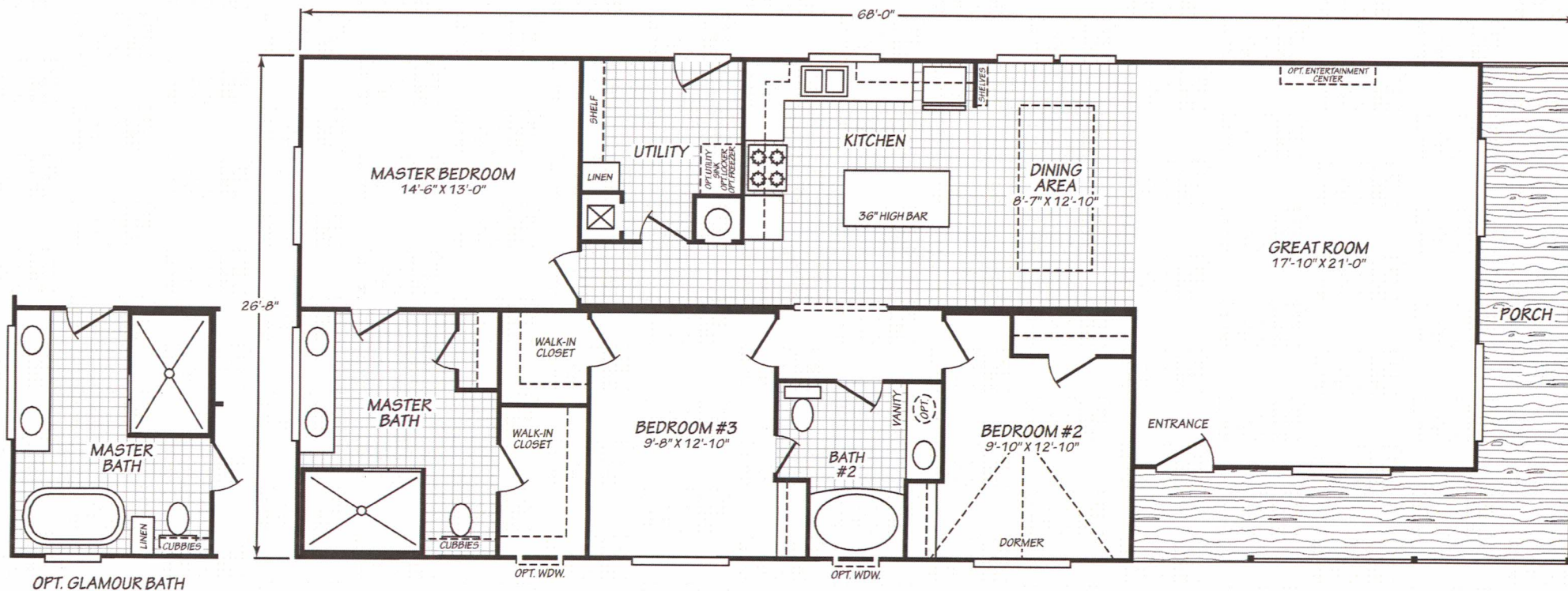
3 Bedroom • 2 Bath • 1,812 Square Feet

©2016 FLEETWOOD HOMES INC. ALL RIGHTS RESERVED

Important: Because we continually update and modify our products, it is important for you to know that our brochures and literature are for illustrative purposes only. **ILLUSTRATIONS MAY SHOW OPTIONAL FEATURES.** All information contained herein may vary from the actual home we build. Dimensions are nominal length and width measurements are from exterior wall to exterior wall. We reserve the right to make changes at any time, without notice or obligation, in prices, colors, materials, specifications, features and models. Please check with your retailer for specific information about the home you select.







## MODEL 28683M

3 Bedroom • 2 Bath • 1,588 Square Feet

©2017 FLEETWOOD HOMES INC. ALL RIGHTS RESERVED

Important: Because we continually update and modify our products, it is important for you to know that our brochures and literature are for illustrative purposes only. **ILLUSTRATIONS MAY SHOW OPTIONAL FEATURES.** All information contained herein may vary from the actual home we build. Dimensions are nominal length and width measurements are from exterior wall to exterior wall. We reserve the right to make changes at any time, without notice or obligation, in prices, colors, materials, specifications, features and models. Please check with your retailer for specific information about the home you select.

